

LISTOFLO CONTROL PANEL

VARIABLE SPEED PUMP CONTROLLER

SS0004
0924

The Sencillo™ ListoFlo Controller is a state-of-the-art duplex/triplex UL508A listed Industrial Control Panel designed specifically for variable speed fluid pumping control. It is optimized for the variable speed sequencing of pumps, with automatic control to maintain a set point (level, pressure, differential pressure, temperature).

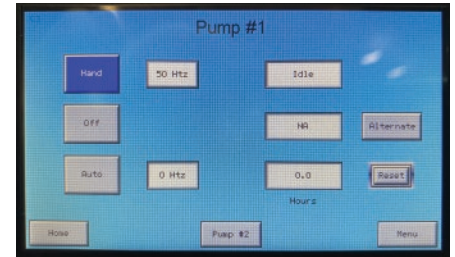
All Sencillo Controllers Offer These Exclusive Features:



Automatically manages the pump operational sequence during startup or after a power outage to prevent dangerous system pressure spikes, over-amping, and pump damage.



Proactively monitors health and status of all major system components and reports any issues or problems immediately so that operators can take quick and effective action.



H2Overflo

Senses when a potential building pipe failure occurs and shuts down the system, avoiding further water damage to a facility.

CONTROLLER FEATURES

- Duplex and Triplex Controllers
- 4" Color Touch Screen HMI
- Thru-the-door Disconnect Switch
- PLC with Logic Software
- Single-Point Power
- SensoGuard™
- Smart Pressure Recovery™
- Backup and Redundancy Logic
- Alarm Log
- Suction and Discharge Pressure Transducers
- Control Circuit Protection
- "Touch Safe" Design



What makes the Sencillo controllers so unique are the setup and monitoring screens. The screen designs make it amazingly simple to set up all parameters of variable speed operation without the need to adjust the drives themselves. The touch screen display provides users with an intuitive graphical representation showing, among other things, when individual pumps are called in and out of service. Users can easily monitor startups and ensure that the system is appropriately tuned to maintain the set point pressure.

Other questions? Lets talk.

Call 610-340-2848 or visit www.SencilloSystems.com



SIMPLE.