

# eKON WATER BOOSTER

The eKon Booster System is our lowest cost duplex, packaged, pre-piped, and wired pumping system. It is designed to provide a constant water pressure with varying demand for flow.

SS0003  
0924

## Automatic Operation

- Speed varies to maintain constant pressure
- Alternation between pumps
- Shuts off during no-flow periods
- Shuts down on loss of source water with auto-restart
- Shuts down on high outlet pressure with auto-restart
- Auto switching to backup pump on pump failure
- Complete alarm package

## Easy 5 Step Installation

- Bolt to floor
- Run power wire to panel
- Attach inlet/outlet pipes
- Open valves
- TURN IT ON

*Unit is ready to pressurize the building*

## Technical Data

Pumps	NSF61 listed end suction centrifugal with motor
Number of Pumps	2
HP	Up to 3 HP
Controller	NEMA 1 Ventilated
Pipe Connections	304SS-NPT, flanged or grooved
Valves	Inlet/outlet isolation valves. Outlet check valves
Frame	Powder-coated steel
Hydro Tank	All sizes available
Pressure Gauges	Liquid filled
Max. Outlet Pressure	None. Project specific
Skid Size (Typical)	35"W x 42L x 72"H
Voltage	1/208, 1/240V 3/208-230V 3/480V
Approval	Conforms to NSF 61/372 standard for safe lead free drinking water*

*\*UL/cUL listed pumping system*

## CONTROLLER FEATURES

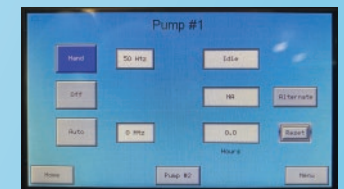
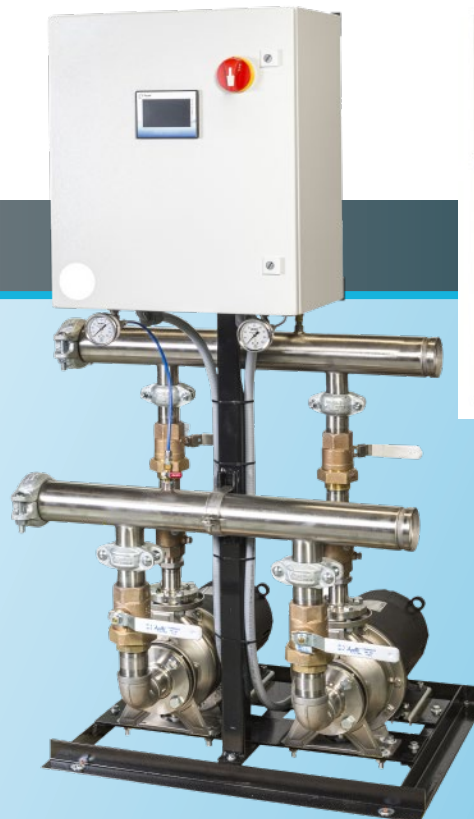
(UL508A Listed)

Power package with:

- Main disconnect switch with thru-the-door handle
- Customer wire terminal block
- Motor circuit breaker for each pump
- Variable speed drive for each pump

Low voltage (24VDC) controls package with:

- Circuit breaker
- Power supply
- PLC
- Color touch screen with graphics package
- All control settings selectable on touch screen



**Other questions? Lets talk.**

Call 610-340-2848 or visit [www.SencilloSystems.com](http://www.SencilloSystems.com)